

# H6L

## Large space intelligent top and bottom feeding machine

- Large operate space, carefree sewing
- Electronic thread loosening, stable thread cutting
- Accurate needle stitch, digital adjustment
- Stepping needle stitch, infinite overlap
- Strong feeding, stable and efficient
- Condense stitch lock, short thread remaining



Jack Wechat



Jack Facebook

### JACK TECHNOLOGY CO.,LTD

No.1008, Donghai Road East, Jiaojiang District, Taizhou city, Zhejiang, China  
TEL: 0086-576-88177782 88177767  
FAX: 0086-576-88177787

E-mail: [sales@chinajack.com](mailto:sales@chinajack.com)  
[www.chinajack.com](http://www.chinajack.com)





H6L

Large space intelligent top and bottom feeding machine  
Large operate space, carefree sewing

Suitable for large sewing products such as bags, seat cushions, swivel chairs, sofas , etc.  
Suitable for sewing: leather, canvas, denim, non-woven fabrics, etc.



Bag



Seat cushion



Swivel chair

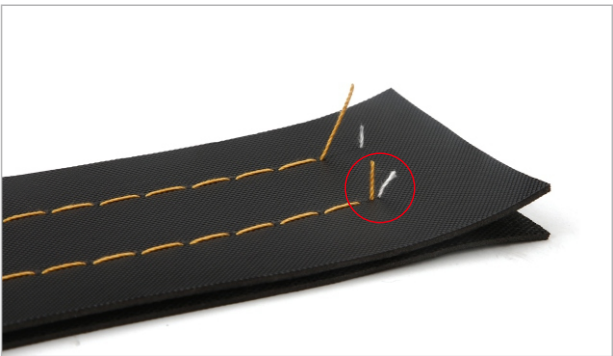


Sofa



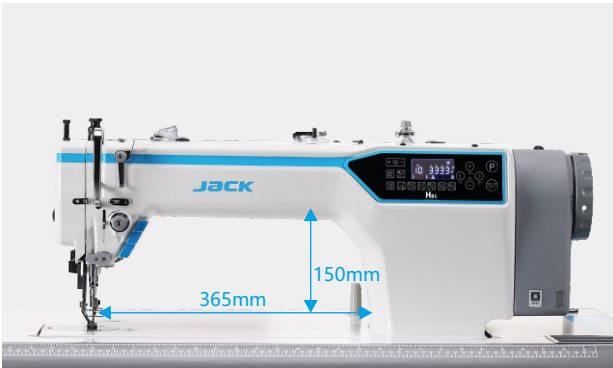
5Strong feeding,stable and efficient

Top and bottom synchronous feeding, 750w power motor, super strong feeding ability, while sewing 8 layers of leather also achieve beautiful stitches.



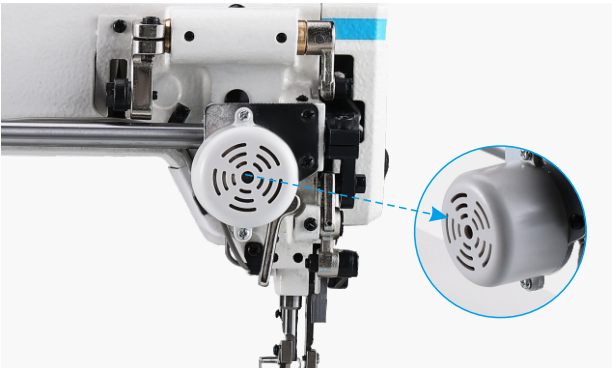
6Condense stitch lock,short thread remaining

It can also realize the function of condense stitch lock to ensure short thread remaining and it is not come loose.



1Large operate space, carefree sewing

The new casing design, lengthened and heightened, the operating space is up to 365mm, and the height is 150mm, suitable for sewing large materials.



2Electronic thread loosening,stable thread cutting

Loosening thread is stable when cutting, effectively control the remaining thread and avoid the off-thread,and the structure is simple and reasonable to realize accurate thread loosening especially for thick materials.



7Voice navigation , easy to use

When the machine fails, you can press the voice navigation button to broadcast professional solutions. Realize smart warranty and convenient maintenance.



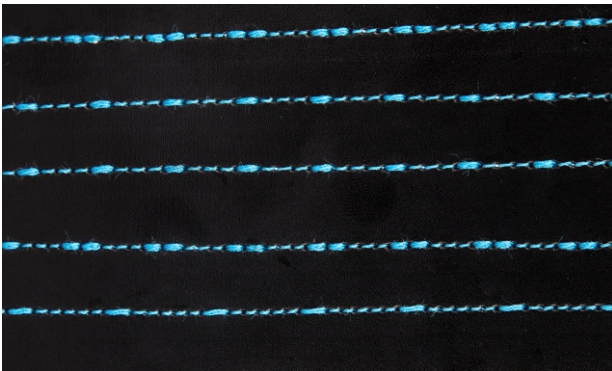
8No heavy , free your knee ( optional )

The knee force of an ordinary or three automatic machine, which is very heavy and harm for knee. Electric or pneumatic auto presser foot lifter can be selected.



3Accurate needle stitch,digital adjustment

Using the stepping motor to control the stitch length, and accurate to 0.1mm, according to different process requirements, it can also achieve 10 mm large needle length.



4Stepping needle stitch,infinite overlap

The stepping technology is adopted to control the needle length, overlapping stitch can be perfectly realize in any stitch length, and the coincidence degree of bar-tacking is high.

Specification

Model	Needle	Thread no.	Needle length ( mm )	Presser Foot Lifter Height (mm)	Max Speed ( S.p.m )	Auto Presser Foot Lifter	Volume (mm)	Weight (kg)
H6L-CZ-3	DPX17 20-23#	2	10	7-16	2200	/	815×345×585	47/55
H6L-CZ-4	DPX17 20-23#	2	10	7-16	2200	electric	815×345×585	50/58